

ATC-820

USB <=> RS-485 Interface Converter

User's Manual



Introduction

The ATC-820 module is a cost-effective way to convert RS485 industrial buses to a USB interface. When connected to a PC USB port the ATC-820 module is automatically detected and is installed as a native COM port which is compatible with any existing serial communication application. Multiple modules can be installed when using USB hubs thus allowing a hassle-free configuration of a multi serial system without any IRQ or DMA configuration. They have 600W protect between the USB port and RS485 protects the PC from spikes or possible misconnections in the communication bus.

Features

The ATC-820 converter can be configured for RS485 two-wire (Half Duplex) networks. When operating in two-wire RS485 the data transfer control is automatically done by the converter. Two independent and RS485 networks can be supported by one ATC-820 module thus duplicating the possible number of remote devices.

- Computer interface: USB V1.1 2.0 Plug and Play.
- Operational system virtual serial port driver.
- Supports Windows 98/ME/XP/2000/CE, MAC & Linux 2.4.20 or superior.
- Field Interfaces: RS-485 Half Duplex (dual buses),

- Automatic flow control for RS485 Half Duplex.
- Transmission rate: from 300 bps to 1Mbps.
- Maximum RS-485 cable length : 1200 m
- Maximum number of devices in the RS485 network:
Half Duplex to 32 devices
- Power: from the USB port.
- Consumption: <100 mA.
- RS-485 bus protection: 600W.
- USB connection: Mini-B connector. 100cm cable with the module.
- RS-485 connector: DB9M or RJ-45 type accepting
- ABS enclosure: 67 x 30 x 24 mm(not include cable)
- Operating environment: 0 to 70°C, 10 to 90% relative humidity, non-condensing.

Wiring configuration

The RS-485 termination of the Interface is implemented as a DB9 plug. The pin assignments for the connector can be found in the following table as well as on a sticker applied to the unit.

RS-485 Pinout at DB9 Male

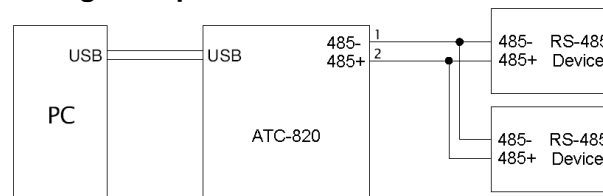
PIN#	RS-485
1	485-
2	485+

LED indication

Red LED ----- Data Sending From USB port to RS-485
Serial Port side

Green LED ----Data Receiving from RS-485 Serial port
side to USB port

Wiring examples



RS-485 2- Wire application

Driver Installation

Follow the steps below to install driver of USB-High Speed Serial Converter:

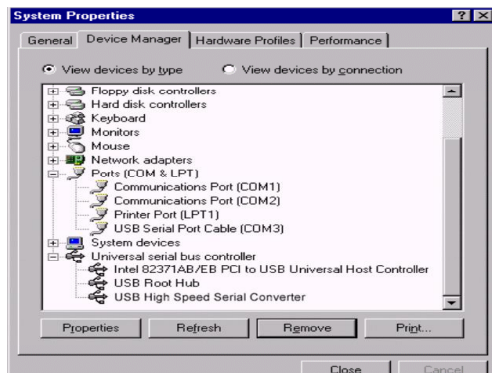
1. Power on your computer and make sure that the USB port is enabled and working properly.
2. Plug in the USB-High Speed Serial Converter into the USB port and run the **Add New Hardware Wizard** to assist you in setting up the new device. Click **Next** to continue.
3. Insert the USB-HS Serial Converter software driver into the CD-ROM drive and click Next to continue. For Windows 98, click **Search for the best driver for your device** and click to search driver from the floppy drive D:\DRIVER\Win98&Win2000.
4. Windows will detect the driver (**FTDIBUS.INF**) and shows the **USB HS SERIAL CONVERTER**. Click Next to continue installation.
5. Click Next to continue and let Windows copy the needed files to your hard disk.
6. When Windows finished installing the software required for the new **USB to Serial Cable**, click Finish.





Setting Up the RS232 Serial Device

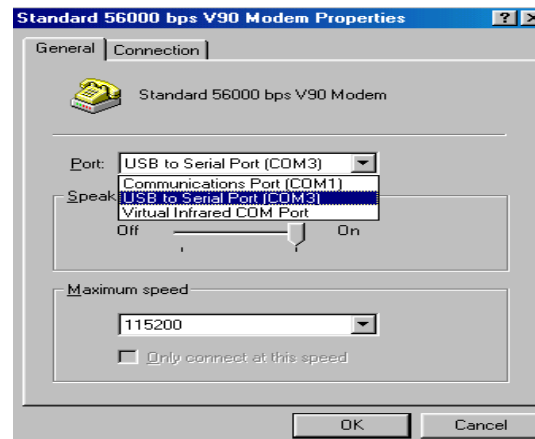
Follow the steps below to connect your RS232 Serial Device (ie: Modem) to the USB port of your PC:



1. Turn off your Modem. Plug the DB 9 (or DB 25) connector of the USB-HS Serial Converter into your Modem. Connect the other end of the USB-HS Serial Converter to an USB type A to type B cable. Turn on the Modem afterwards.
2. Turn on your computer and plug in the USB connector of the USB-HS Serial Converter into the USB port.
3. If you have already installed a Modem device before, click Start, Settings, Modems. Open Modems

Properties, select the Modem, click Properties. In General tab, please change the **Port** value to **USB Serial Port (COM3)**.

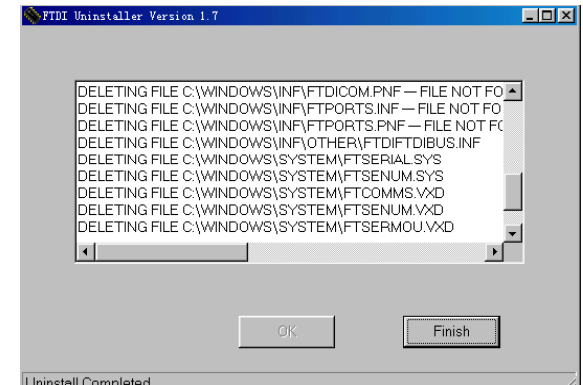
4. After finishing these processes, you can use USB to Serial Bridge Cable to connect RS232 Serial 56K FAX Modem and execute the Dial-up function to connect Internet, and send the FAX with the FAX software (ie: Microsoft FAX) properly.



Uninstalling the Driver Program

If you want to remove the USB-HS Serial Converter driver program, you can uninstall it by following the steps below:

1. Unplug the USB-HS Serial Converter from your PC.
2. Run the **D:\Driver\Win98&win2000\FTDIUNIN.EXE** program from the software CD-ROM, Click finish then reboot the PC.



Disclaimer

Information in this document is subject to change without notice. The manufacturer does not make any representations or warranties (implied or otherwise) regarding the accuracy and completeness of this document and shall in no event be liable for any loss of profit or any other commercial damage, including but not limited to special, incidental, consequential, or other damages. No part of this document may be reproduced or transmitted in any form by any means, electronic or mechanical, including photocopying, recording or information recording and retrieval systems without the express written permission of the manufacturer.

All brand names and product names used in this document are trademarks, or registered trademarks of their respective holders.